



## Are You Ready?

Hurricanes are a normal phenomenon in Florida. Each year, particularly between June 1<sup>st</sup> and November 30<sup>th</sup>, all residents and visitors need to be prepared for the effects of a hurricane or severe weather. Each household, visitor and business must develop a **PLAN OF ACTION** for hurricanes and severe weather.

This guide will lead you through the steps needed to develop a **PLAN OF ACTION**. The guide will define unfamiliar hurricane terms and explain how to protect yourself, your family and your home, prepare your automobile, and keep your pets safe. It will explain what to expect after the storm.

### KNOW THE HAZARDS

**Wind** - A hurricane is a tropical storm with constant winds greater than 74 miles per hour. These winds can extend inland for hundreds of miles. Hurricanes can spawn tornadoes which add to its potential destruction.

**Rain** - Because of the tropical nature of a hurricane they contain rain. Sometimes the torrential rain will cause floods and flash flooding.

**Storm Surge** - The most dangerous element of a hurricane. This is a dome of ocean water that can be 20 feet high at its peak and 50 to 100 miles wide. Nine out of 10 hurricane fatalities are attributable to the storm surge.

### Watches and Warnings

**Hurricane Watch** - The National Weather Service issues the advisory when there is a threat of hurricane conditions within 24-36 hours.

**Hurricane Warning** - This National Weather Service advisory is issued when hurricane conditions are expected in 24 hours or less.

## Hurricane Categories

Category	Winds	Storm Surge
1	74-95 mph	4-5 feet
Damage primarily to shrubbery, trees, and unanchored mobile homes. No real damage to other structures. Some damage to poorly-constructed signs. Low-lying coastal roads inundated, minor pier damage, some small craft in exposed anchorage torn from moorings.		
2	96-110	6-8
Considerable damage to shrubbery and tree foliage; some trees blown down. Major damage to exposed mobile homes. Extensive damage to poorly constructed signs; some damage to roofing materials of buildings; and some window and door damage. No major damage to buildings. Coastal roads and low-lying escape routes inland cut by rising water two-four hours before arrival of the hurricane's center. Considerable damage to piers. Marinas flooded and small craft in unprotected anchorages torn from moorings.		
3	111-130	9-12
Foliage torn from trees; large trees blown down. Practically all poorly-constructed signs blown down; some damage to roofing materials of buildings; some window and door damage; and some structural damage to small buildings. Mobile homes destroyed. Serious flooding at coast and many smaller structures near coast destroyed; low-lying escape routes inland cut by rising water three-five hours before the hurricane's center arrives.		
4	131-155	13-18
Shrubs and trees blown down; all signs down. Extensive damage to roofing materials, windows and doors; complete failure of roofs on many small residences; complete destruction of mobile homes. Major damage to lower floors of structures near shore due to flooding and battering by waves and floating debris.		

5

155 +

18+

Shrubs and trees blown down; considerable damage to roofs of buildings; all signs down; very severe and extensive damage to windows and doors; complete failure of roofs on many residences and industrial buildings; extensive shattering of glass in windows and doors; some complete building failures; small buildings overturned or blown away and complete destruction of mobile homes. Low-lying escape routes inland cut by rising water three-five hours before the hurricane's center arrives.

## Develop a Plan

### Before Hurricane Season

- ✓ Develop a family plan (including pets) for hurricane survival.
- ✓ Obtain the necessary materials to protect your windows and doors. Don't forget the garage door. SHUTTERS ARE A MUST!
- ✓ Check your roof and the structure of your house. Make necessary repairs.
- ✓ Trim trees and branches, remove coconuts and other yard debris (watch out for power lines).
- ✓ Check your fire extinguishers.
- ✓ Make arrangements to secure your boat.
- ✓ Identify a friend or family member (outside the area) that will keep information about how you are doing. Instruct others to get this information from them.
- ✓ Put together a Hurricane Survival Kit.

### Who Should Evacuate

- **PLAN A** - Typically a Category 1-2 hurricane - all residents in the area east of the Intracoastal Waterway within Broward County.
- **PLAN B** - Typically a Category 3, 4 or 5 hurricane - all residents in the area east of U.S. 1/Federal Highway within Broward County.

### AND

Those persons located in low lying areas or beside tidal bodies of water should seek shelter elsewhere if conditions warrant. All mobile home residents must evacuate in **PLAN A** and **PLAN B**. In addition, residents may be ordered to evacuate if tropical storm conditions warrant.

### Decide Now Where You And Your Family Will Go When The Next Hurricane Threatens

- Decide on a specific place. The protected house of a friend outside the evacuation zone, a secure motel or hotel within the county or, as a last resort, a public shelter.
- Do not stay in any structure without good shutters or properly designed and installed hurricane protection during any hurricane.
- Do not count on driving north on the Turnpike or I-95. They will be jammed.
- Do not count on going to the airport and flying out.
- Plan on staying in South Florida.

## During the Hurricane

- Monitor local media for emergency instructions.
- Stay indoors. Stay away from doors and windows. Locate in a safe room or area in the interior of your house.
- Do not go outside in the calm of the hurricane "eye". In the "eye" winds and rain may stop for a few minutes or more than an hour. **Beware** — winds will return with greater intensity from the opposite direction.
- Call 911 ONLY for emergencies. Avoid using the telephone unless necessary.
- Turn off gas and electric. Use flashlights and battery powered lanterns. *Do Not Use Candles.*

### Hurricane Supplies

#### Plan on 7 days

- |  |  |
|--|--|
| ● First Aid Kit                        | ● High energy foods                    |
| ● 2 week supply of medication          | ● Special foods                        |
| ● Portable radio                       | ● Stress foods (candy, gum)            |
| ● Flashlight                           | ● Manual can opener                    |
| ● Extra batteries                      | ● Vitamins                             |
| ● 1 gallon of water per person per day | ● Paper plates and disposable utensils |
| ● Personal hygiene items               | ● Plastic bags                         |
| ● Toilet paper/towelettes              | ● Pet foods                            |
| ● Soap, liquid detergent               | ● Duct tape                            |
| ● Diapers and baby food                | ● Heavy gloves                         |
| ● Ready to eat canned foods            | ● Sturdy shoes                         |
| ● Unscented household bleach           | ● Change of clothes                    |
|  | ● Insurance papers                     |
|  | ● Cash or travelers checks             |

### Home Health Care and Homebound

- If you are a homebound patient and/or dependent on any medical device that requires electricity contact your physician for their recommendation.
- If you are receiving home health care service you must insure that your health care service/provider has developed a specific hurricane plan for you.
- If you require oxygen, check with your supplier about emergency plans.
- If you evacuate, remember to take medications, written instructions regarding your care, your walker, wheelchair, cane, identification, or special equipment along with bedding.
- If you need assistance in an evacuation, register NOW with the Broward County Elderly and Veterans Services, 954-537-2888.

### Special Medical Needs

All persons with a potentially severe medical need or dependency should contact their service provider or Broward County Elderly & Veteran Services for detailed preparedness information. In addition, if you are dependent on life support systems or any medical device which requires electricity, be aware that the power may be off for some time during and after a hurricane.

PLAN NOW to relocate early for any hurricane that may strike our area. Special transportation service to shelters and special needs shelters may be available to you but you MUST be pre-registered with Broward County Elderly & Veteran Services.

Call Broward County Elderly & Veteran Services now for detailed information:

### Special Needs Registry

954-537-2888

TTY 954-537-2882

# BROWARD COUNTY FLORIDA 2007 Hurricane Hotline: 954-831-4000 HURRICANE EVACUATION MAP

## Broward Emergency Management Agency

201 N. W. 84th Avenue, Plantation, FL 33324

Telephone: 954-831-3900

**Hurricane Hotline: 954-831-4000**

## AMERICAN RED CROSS Regional Hurricane Shelters

- 1) **Lyons Creek Middle School**  
4333 Sol Press Blvd., Coconut Creek 33073
- 2) **Coral Glades High School**  
2700 Sportsplex Dr, Coral Springs 33065
- 3) **Monarch High School**  
5050 Wiles Road, Coconut Creek 33073
- 4) **Pompano Beach Institute of International Studies High School**  
1400 N. E. 6th St., Pompano Beach 33060
- 5) **Park Lakes Elementary School**  
3925 N. State Road 7, Lauderdale Lakes 33319
- 6) **Rock Island Elementary/Arthur Ashe Middle School**  
1701 N. W. 23rd Ave., Fort Lauderdale 33311
- 7) **Plantation Elementary School**  
651 N. W. 42nd Ave., Plantation 33317
- 8) **Fox Trail Elementary School**  
1250 Nob Hill Road, Davie 33324
- 9) **Falcon Cove Middle School**  
4251 Bonaventure Blvd., Weston 33332
- 10) **Silver Trail Middle School**  
18300 Sheridan St., Pembroke Pines 33331
- 11) **New Renaissance Middle School**  
10701 Miramar Blvd., Miramar 33025
- 12) **Watkins Elementary School**  
3520 S. W. 52nd Ave., Pembroke Park 33023

Not all shelters may be open during a state of emergency. In the event of an evacuation order, monitor news reports or call the Broward County Hurricane Hotline, 954-831-4000, for specific shelter openings.

### Pet-Friendly Shelter

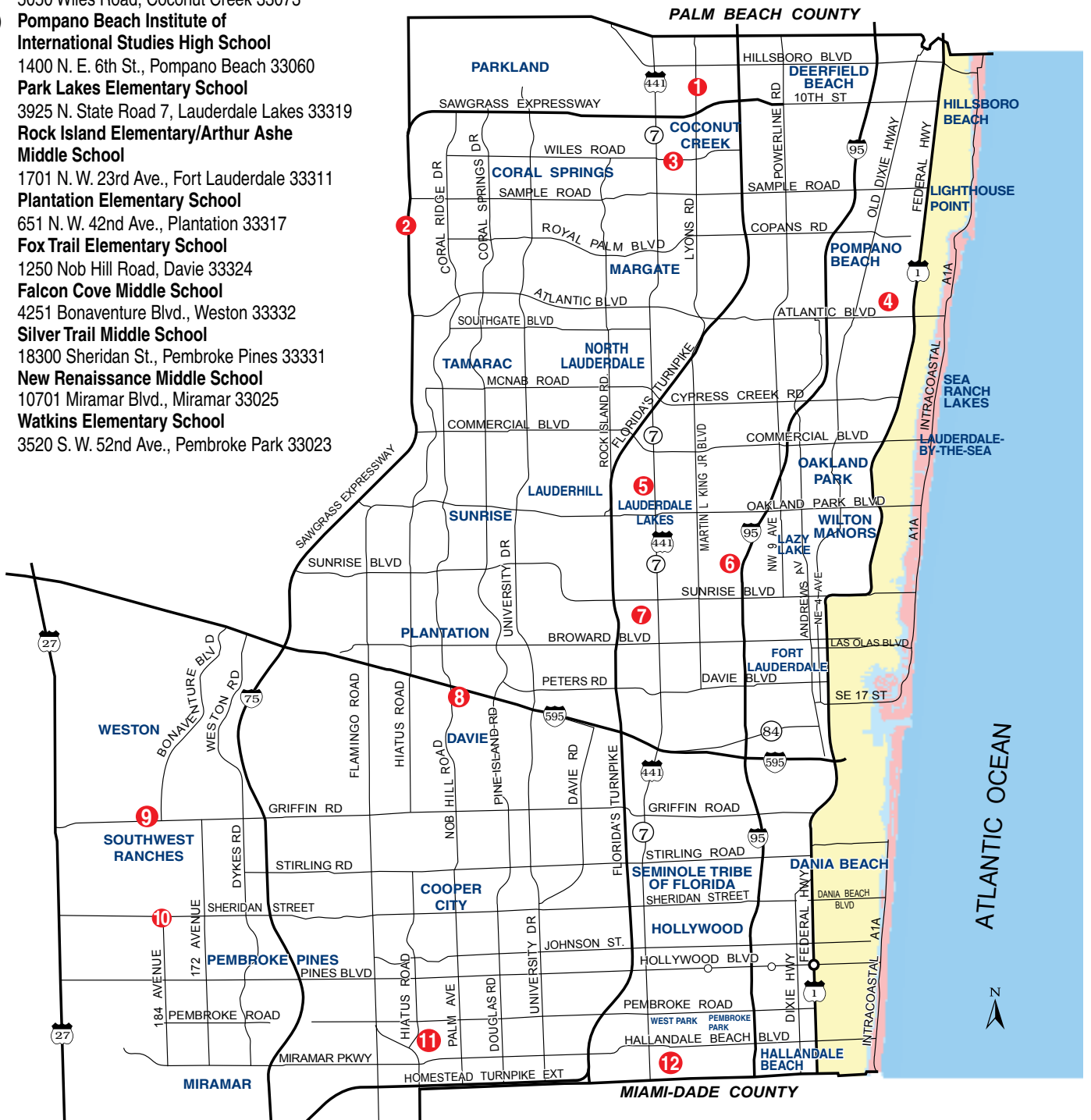
A pet-friendly shelter operated by the American Red Cross and the Broward County Humane Society is available to residents with pets who either live in an evacuation area, or a mobile home anywhere in Broward County. Pre-registration is required. Call the Humane Society at 954-989-3977.

 **PLAN A**

 **PLAN B**

Typically a Category 1-2 hurricane. Typically a Category 3 or higher hurricane.

Those persons located in low lying areas or beside tidal bodies of water should seek shelter elsewhere if conditions warrant. ALL mobile home residents must evacuate in PLAN A and PLAN B. In addition, mobile home residents may be ordered to evacuate if tropical storm conditions warrant.



# After the Storm

After a disaster, you may be without power, water, food or any of the services and businesses we rely on. Immediate response may not be possible, so residents must be prepared to be self-reliant for days.

## RE-ENTRY

- Be Patient. Access to affected areas will be controlled to prevent looting and injuries. Roads may be blocked, trees and power lines down.
- Local radio and television stations will be a key source of information concerning aid.
- Have valid local identification.
- Avoid driving.

## FOR YOUR OWN SAFETY

- Avoid downed and dangling wires when clearing debris and fallen trees. Treat all lines as if they are energized.
- Beware of standing water, it may contain power lines, contamination or other dangers.
- Be careful with fire. Avoid candles. Use battery powered flashlights and lanterns.
- Check for gas leaks. Open windows and doors to ventilate and dry your home.
- Use your telephone only for emergencies.
- If there has been flooding, have an electrician inspect your home or office before turning on the breaker.
- Use grills outdoors in a well-ventilated area.
- Do not use power tools that you are unfamiliar with.
- Do not connect portable generators to building wiring (this could cause injury or death to neighbors or linemen trying to restore power). Plug appliances directly into the generator.

## REPAIRS

- Take video or photos of all damage before repairs and keep receipts for insurance purposes.
- Contact your insurance company. Have your policy readily available so you can refer to the extent of your coverage.
- Make temporary repairs to correct safety hazards and minimize further damage. This may include covering holes in the roof, walls or windows and debris removal.
- Protect yourself from contractor fraud. Only hire licensed contractors to do repairs. Check with your local building department.
- Contact your local building department to obtain required permits for demolition or repairs.

# Important Phone Numbers

American Red Cross..... 954-797-3800  
Salvation Army ..... 954-524-6991  
Broward County  
Hurricane Hotline ..... 954-831-4000  
TTY..... 954-831-3940  
Broward Emergency  
Management Agency..... 954-831-3900  
In emergencies for police,  
fire or medical assistance, dial .....911

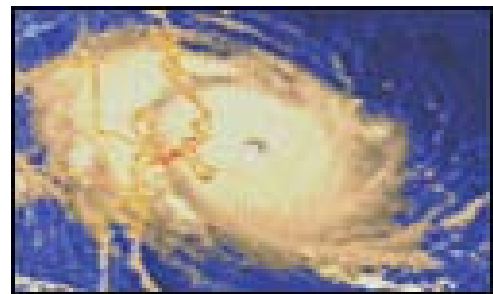
## WEB SITES

Broward Emergency  
Management Agency  
[www.broward.org/disaster](http://www.broward.org/disaster)

State of Florida Emergency Management  
[www.floridadisaster.org](http://www.floridadisaster.org)

Federal Emergency Management Agency  
(FEMA)  
[www.fema.gov](http://www.fema.gov)

Broward County Chapter  
American Red Cross  
[www.arcbcc.org](http://www.arcbcc.org)



### BROWARD EMERGENCY MANAGEMENT AGENCY

201 N. W. 84th Avenue  
Plantation, FL 33324  
954-831-3900 • Fax 954-382-5805

### Broward County Board of County Commissioners

An equal opportunity employer and provider of services.

Josephus Eggelletion, Jr. • Sue Gunzburger • Kristin D. Jacobs • Ken Keechl • Ilene Lieberman • Stacy Ritter

John E. Rodstrom, Jr. • Diana Wasserman-Rubin • Lois Wexler

This public document was promulgated at a cost of \$3,264.00, or \$0.102 per copy, to inform the public about hurricane safety

This publication can be made available in large print, tape cassette or braille by request